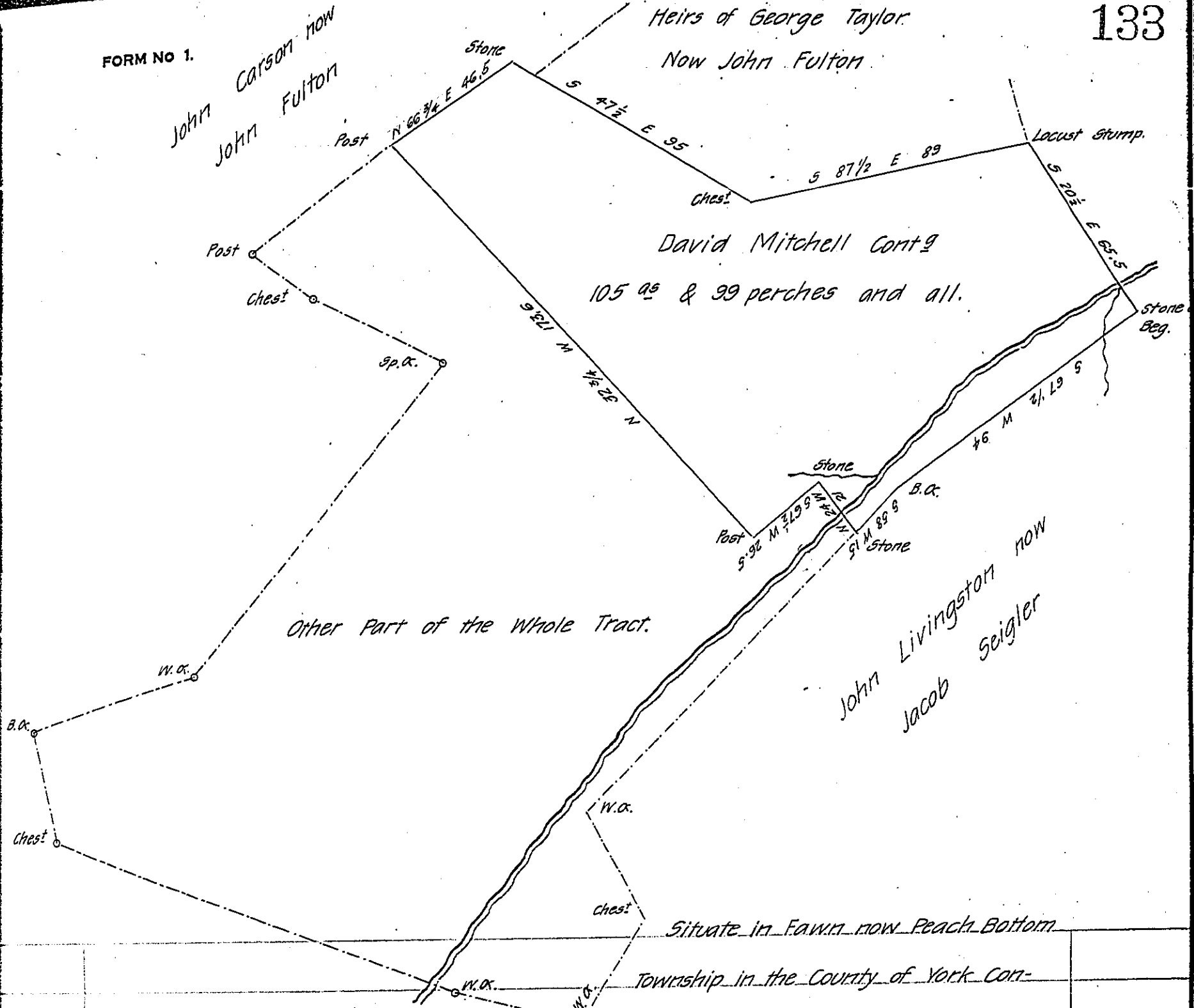


FORM NO 1.



Situate in Fawn now Peach Bottom Township in the County of York containing as above set forth 105 ac & 99 perches and allowance being part of a larger tract of 281 ac & 65 perches and allowance Originally surveyed the 16<sup>th</sup> day of April A.D. 1773 for George Mitchell in pursuance of 2 warrants one for 200 ac the other for 100 ac both dated 5<sup>th</sup> day of January A.D. 1773 the above part resurveyed and divided off from the said larger Tract on the 30<sup>th</sup> day of March A.D. 1820 and now on the 27<sup>th</sup> day of December A.D. 1838 at the request of David Mitchell the present owner the same is calculated, Corrected, and returned for Confirmation

Per

Hugh Jarbert D.S.

Mr. John Taylor Esqr.

S. G. Harrisburg

IN TESTIMONY that the above is a copy of the original remaining on file in the Department of Internal Affairs of Pennsylvania, made conformably to an Act of Assembly approved the 16th day of February, 1833, I have hereunto set my Hand and caused the Seal of said Department to be affixed at Harrisburg, this thirteenth day of April 1908

*Nevins Houch*  
Secretary of Internal Affairs.